

Living and Non-Living Things

Living things move, feed, feel things, breathe, grow and reproduce. Plants are alive too even though we can't see them moving, feeding or breathing! Non-living things do not move, feed, feel things, breathe, grow or reproduce.

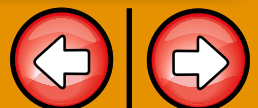
living - animals



living - plants



non-living



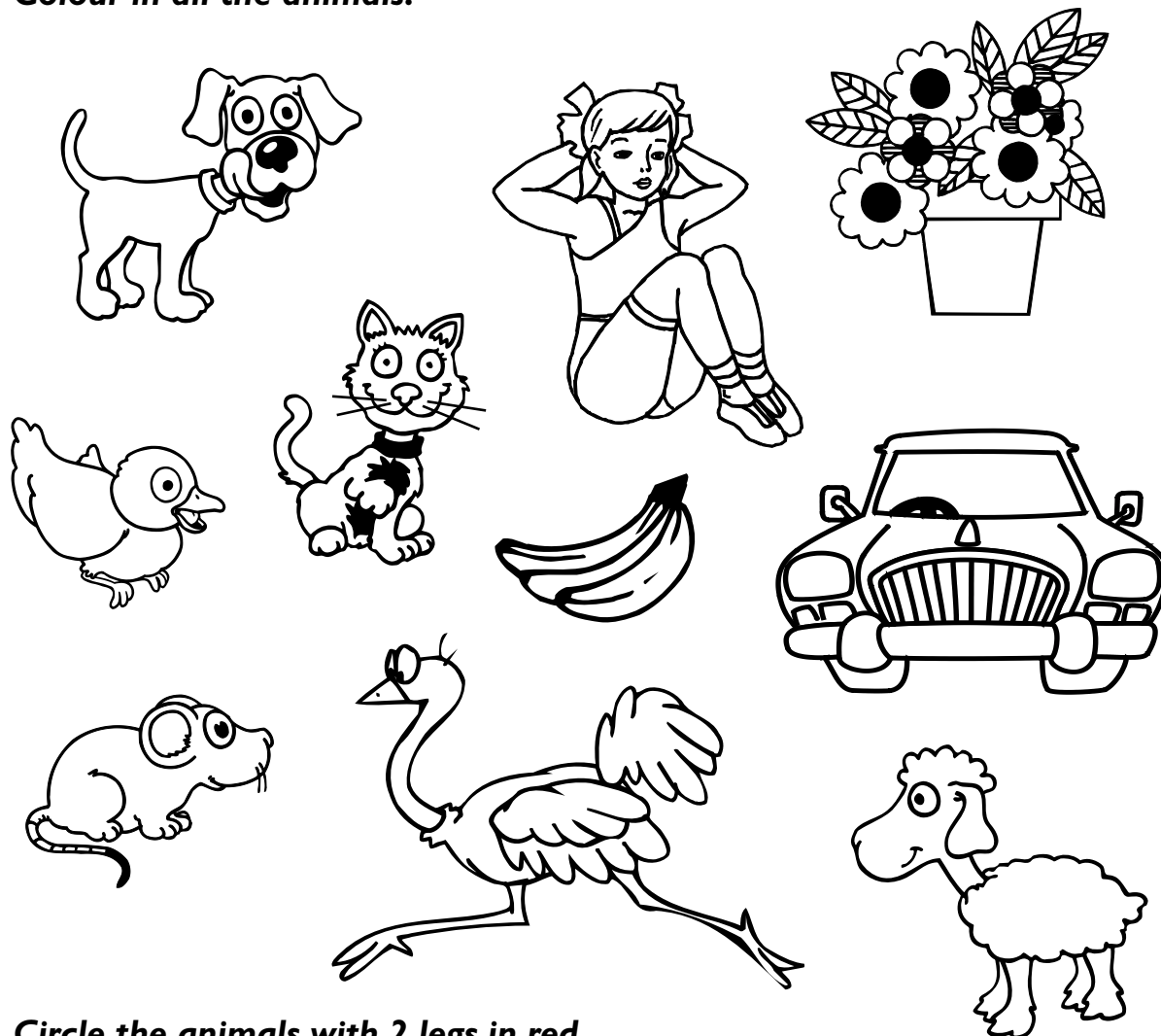
Name: _____

Ourselves & other living things!

11

Animal magic!

Colour in all the animals.

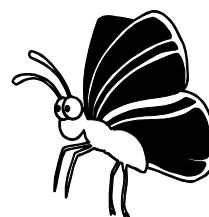


Circle the animals with 2 legs in red.

Circle the animals with 4 or more legs in blue.

Did you remember that we are animals too?

Fill in the chart by looking at your circles.



2 legs	4 legs or more
ostrich	

Body parts!

FACT

We all have many body parts. They work together to help us to do the things we want to do. Mouths help us to eat and talk.

What do hands help us to do?

Draw a line from each label to the body part on Hassan and Judy.



HASSAN

- arm**
- leg**
- head**
- foot**
- hand**
- eye**
- nose**
- mouth**
- knee**
- chest**



JUDY

Do you know the names of any other body parts seen in the pictures?

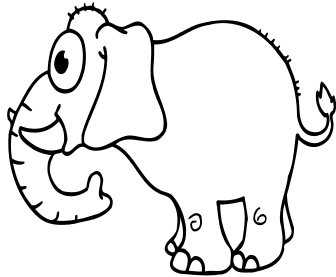
Name: _____

Ourselves & other living things!

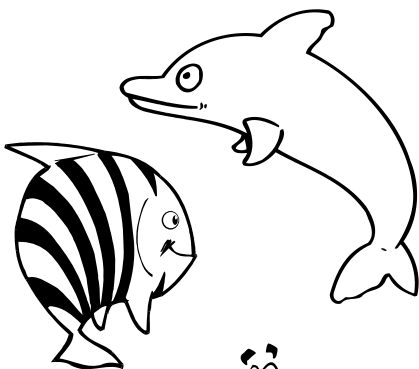
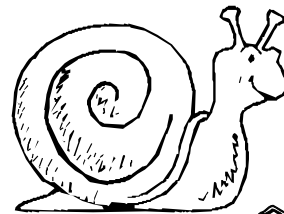
15

Movement

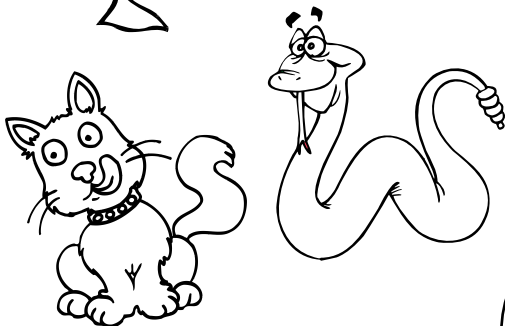
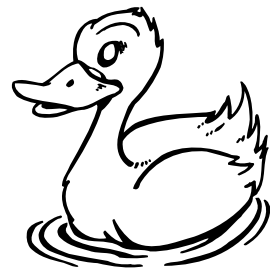
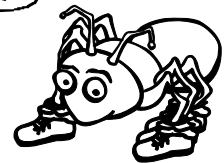
Different animals move in different ways. Some walk, some swim, some fly and some slither or slide. **Join each animal to the correct circle.**



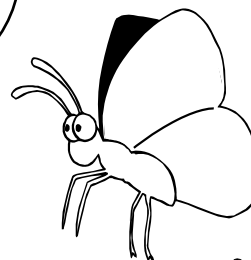
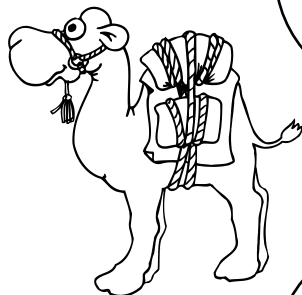
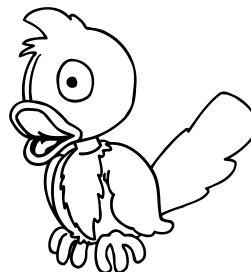
walk



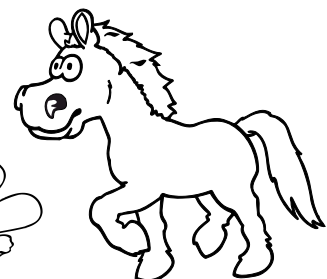
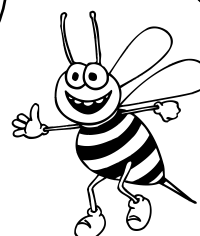
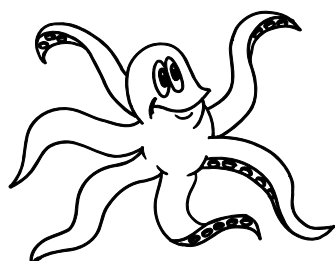
fly



swim

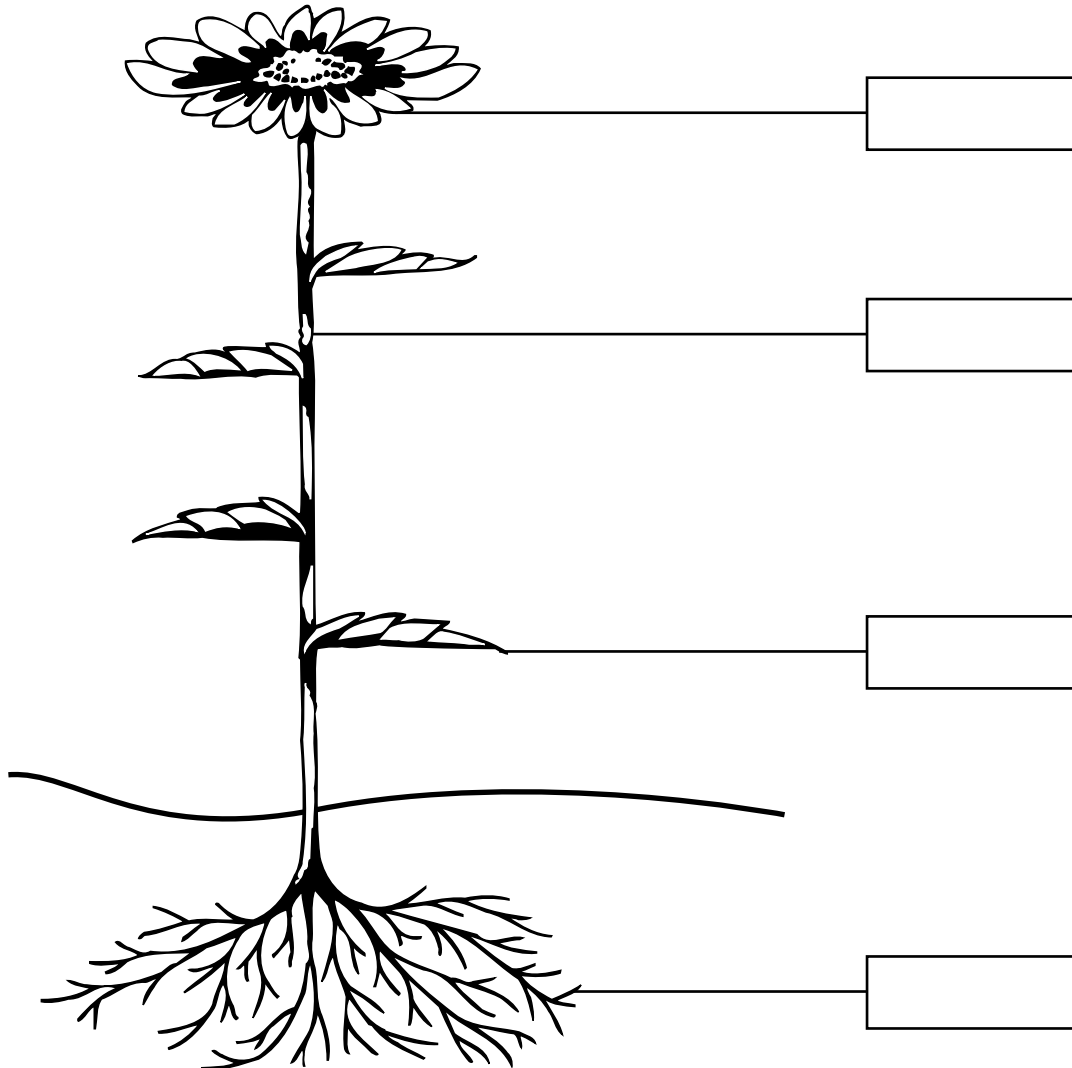


slide



The parts of a plant

Fill in the labels on the plant. Choose from root, leaf, flower or stem.



Read each sentence. Join each sentence to the correct plant label.

1) I hold the flower up.

root

2) I take up water from the soil.

leaf

3) I make food for the plant.

flower

4) I hold the plant down.

stem

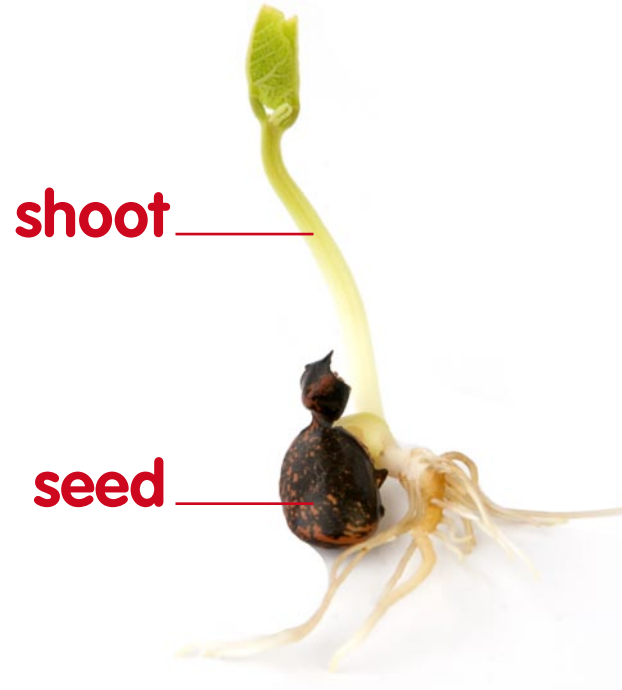
5) I am pretty and smell nice.

Plant Parts!

Plants need **water** and **light** to grow well.

Not enough light will make a plant turn yellow and not grow well. Not enough water will make a plant go brown and die.

The **roots** of a plant are down in the soil below the **bulb** or **seed**. Roots hold the plant in place and suck up water from the soil. The **leaves** make food for the plant and the **stem** holds the **flower** up.



shoot

seed

Some plants grow from seeds not bulbs.



flower
petals

stem
leaves

bulb
roots

